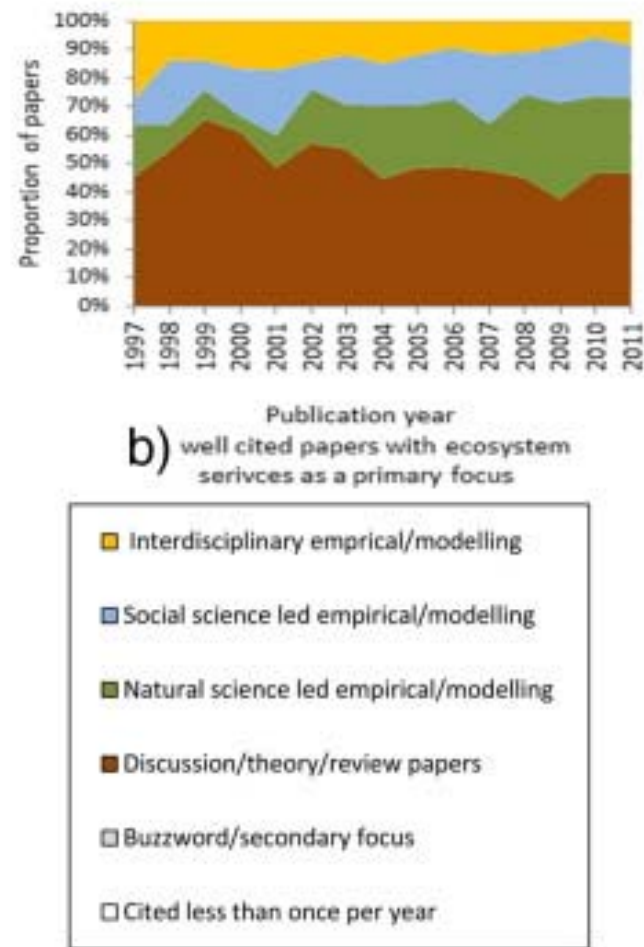
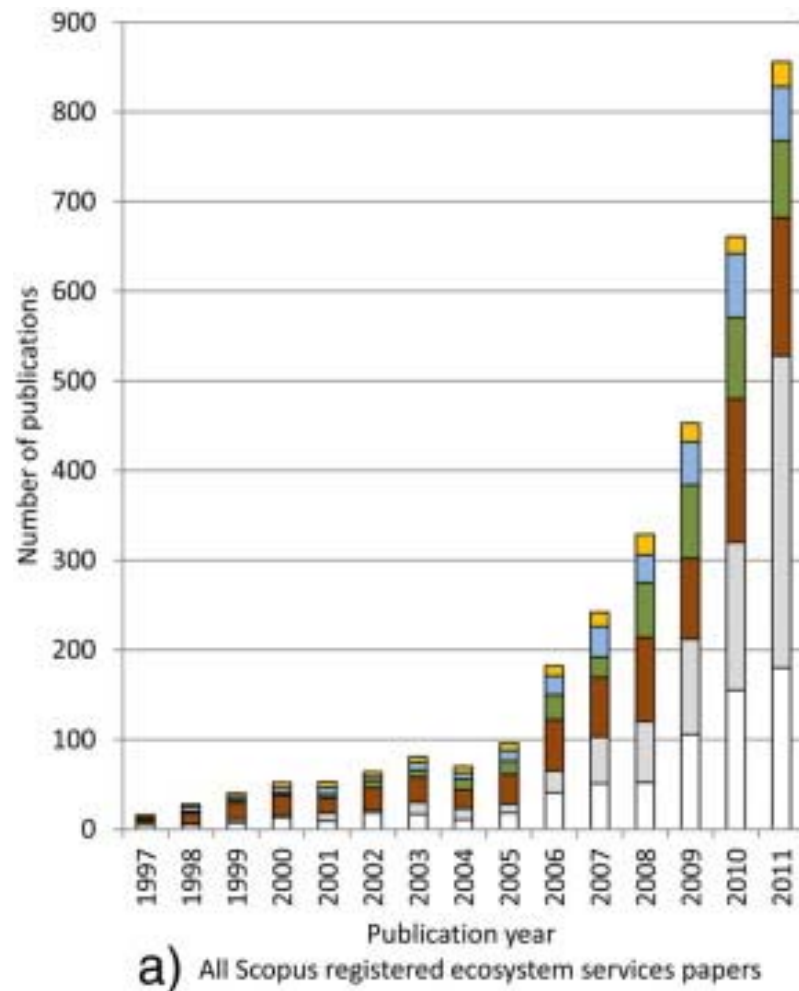


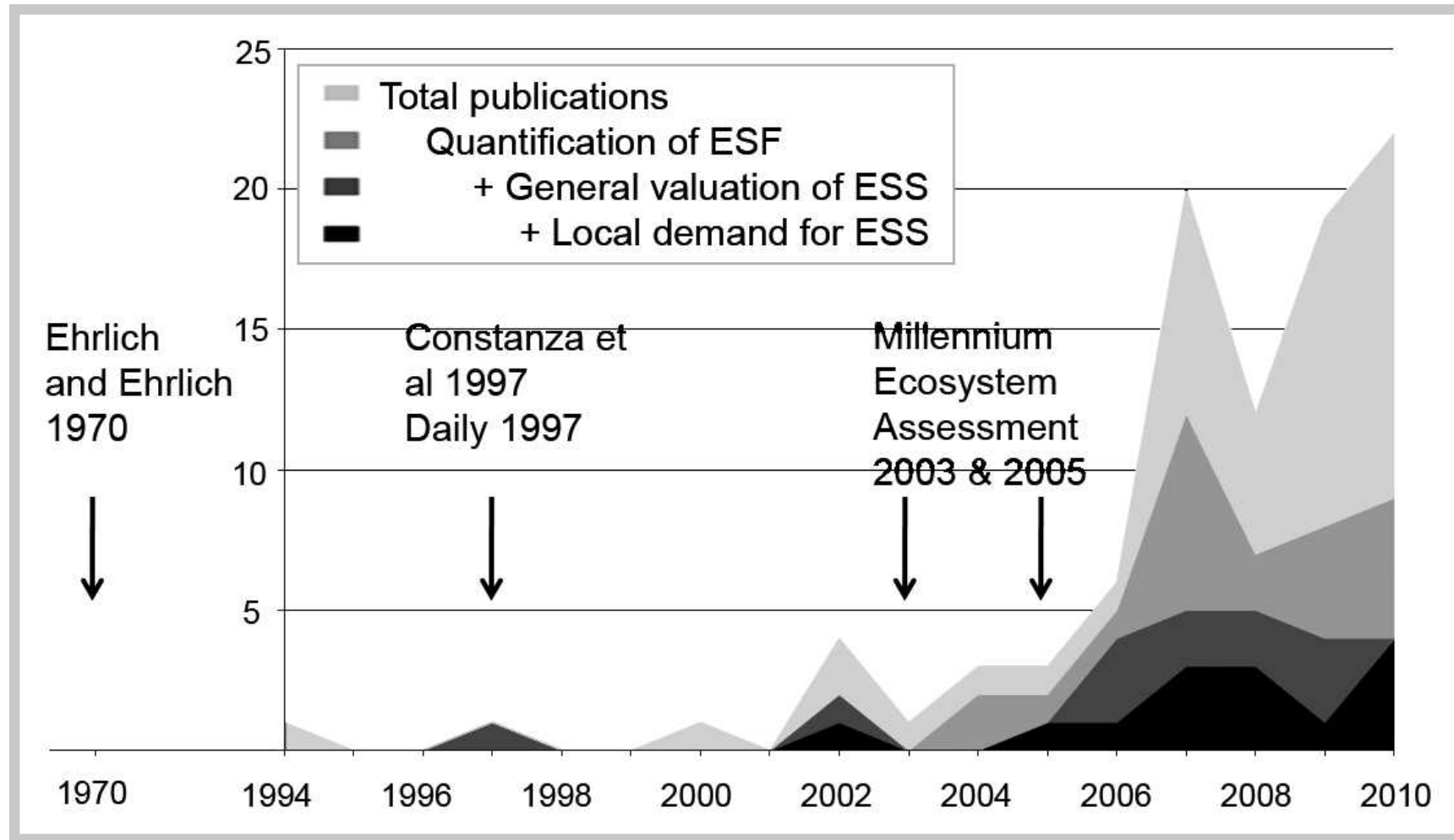
Ecosystem services – a Procrustean bed?

Prof. Dr. Adrienne Grêt-Regamey
 Planning of Landscape and Urban Systems PLUS
 ETH Zürich, Switzerland

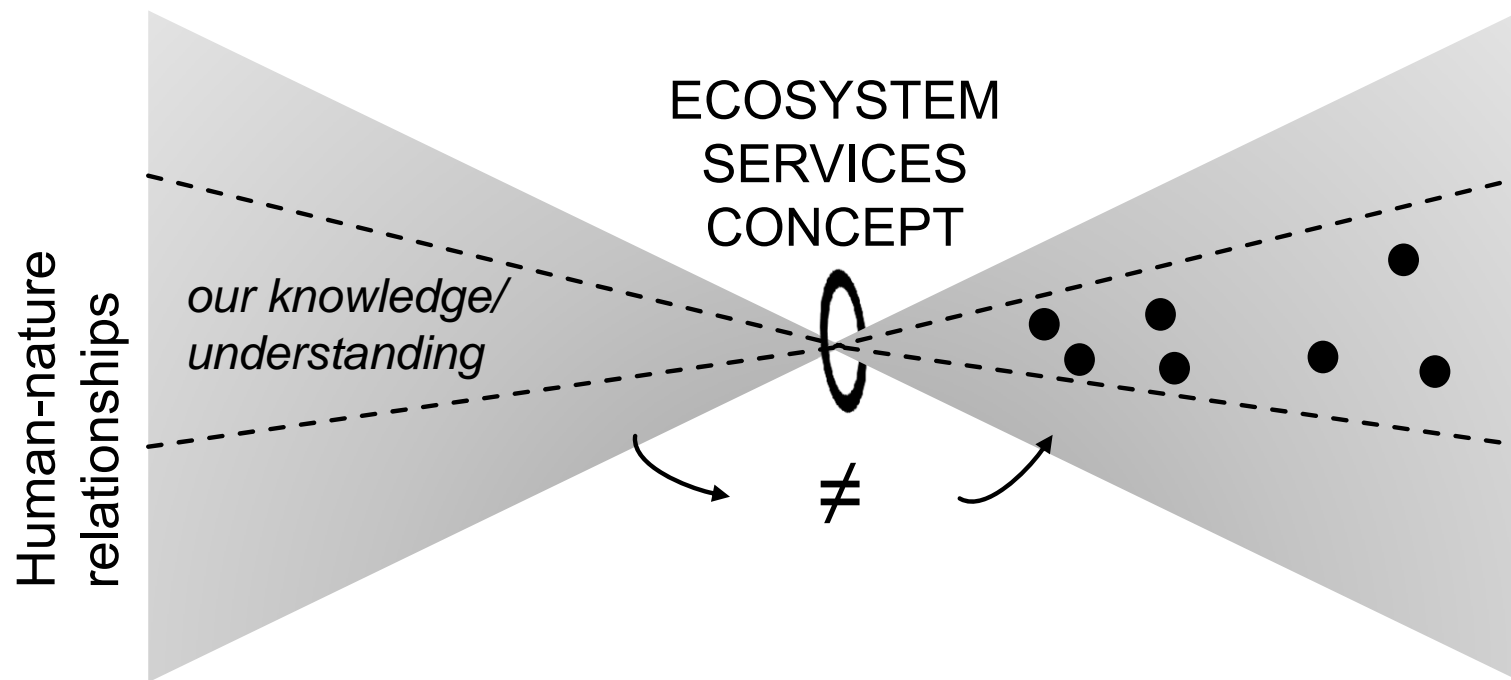
Ecosystem Services – a Procrustean bed



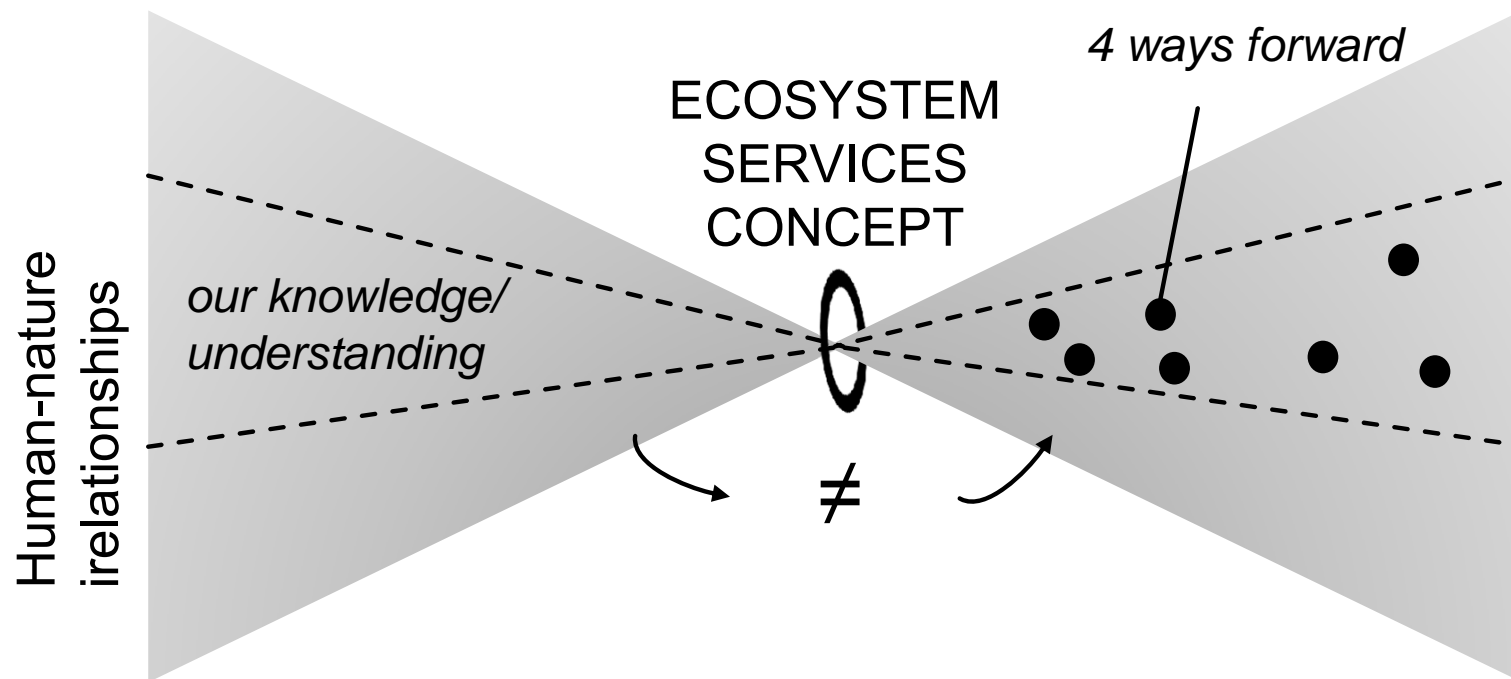
Ecosystem Services – a Procustrean bed



Ecosystem Services – a Procastream bed



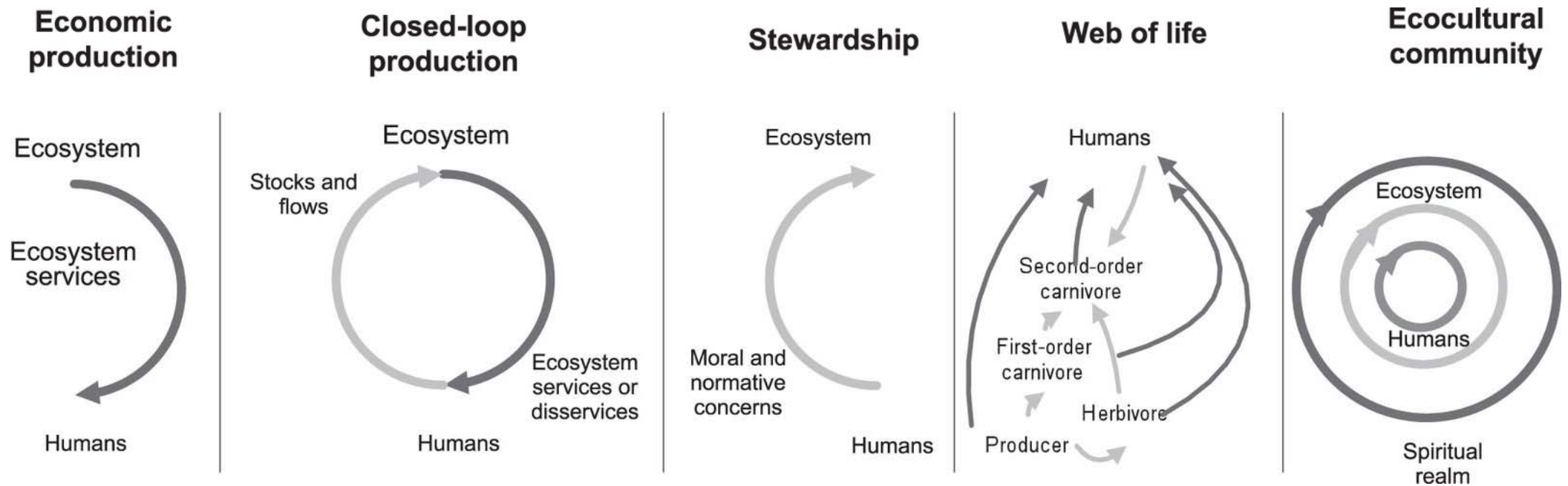
Ecosystem Services – a Procustrean bed



“If nature is valued, we can save it!” – an exploitive human-nature relationship, ignoring the intrinsic values of nature.



1. Way forward: considering additional metaphors of human-nature relationships



1. Way forward: considering additional metaphors of human-nature relationships



Stakeholder integration – Iterative & collaborative

2. Way forward: Reconnecting society and nature through geodesign

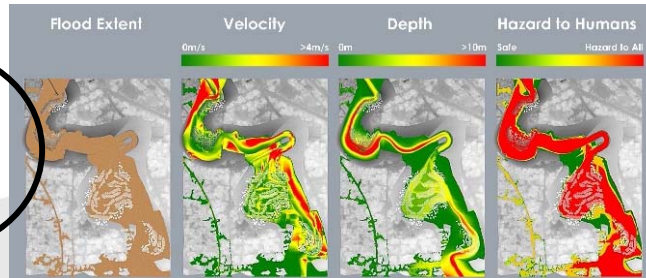


Restoring the Ciliwung River (Indonesia)

1



2

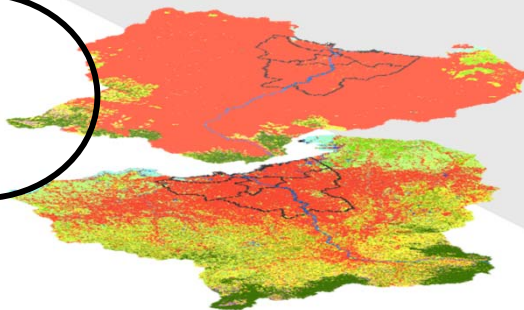


Hydrological modeling



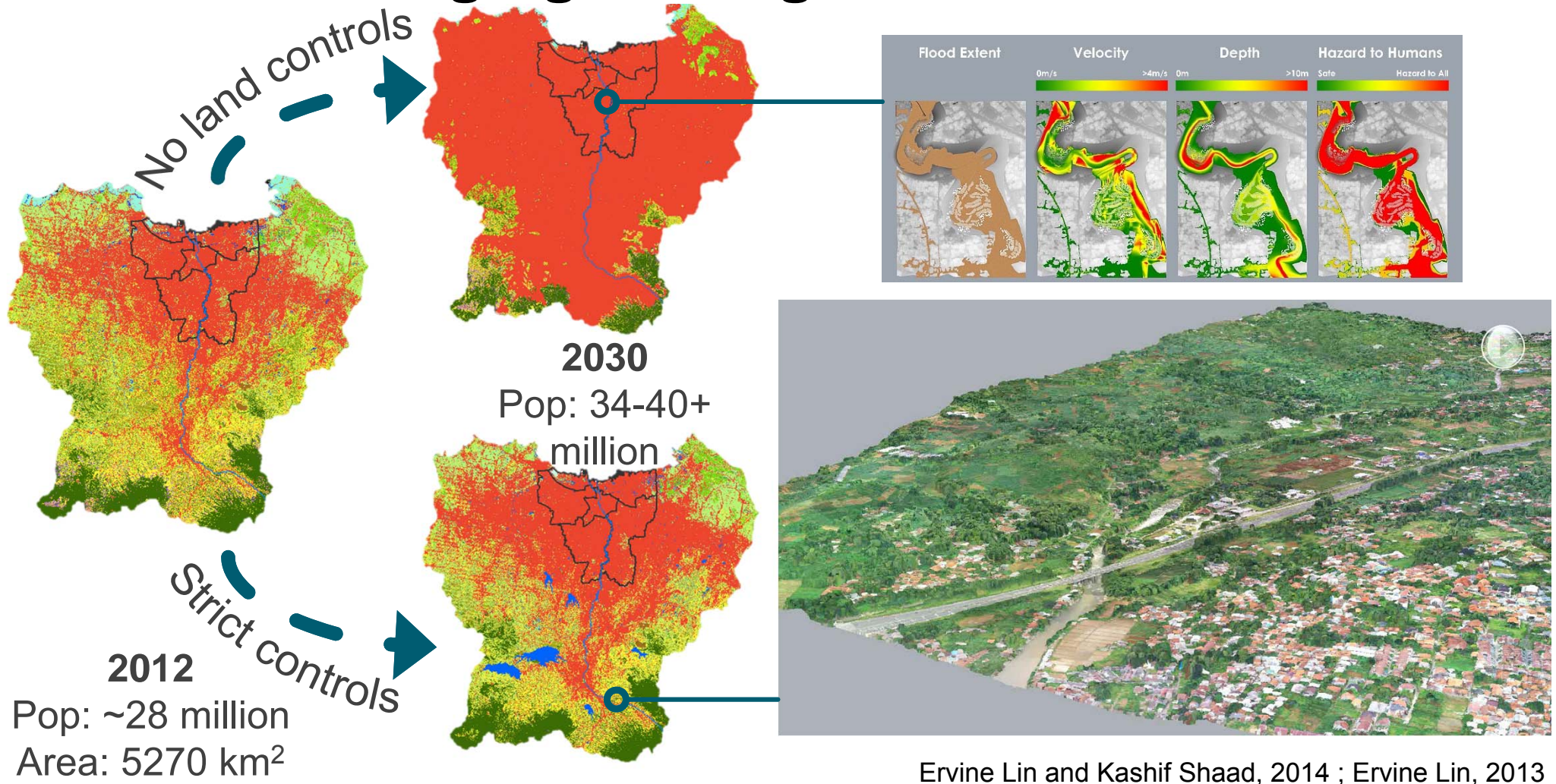
Discrete choice experiment

3



MCDA

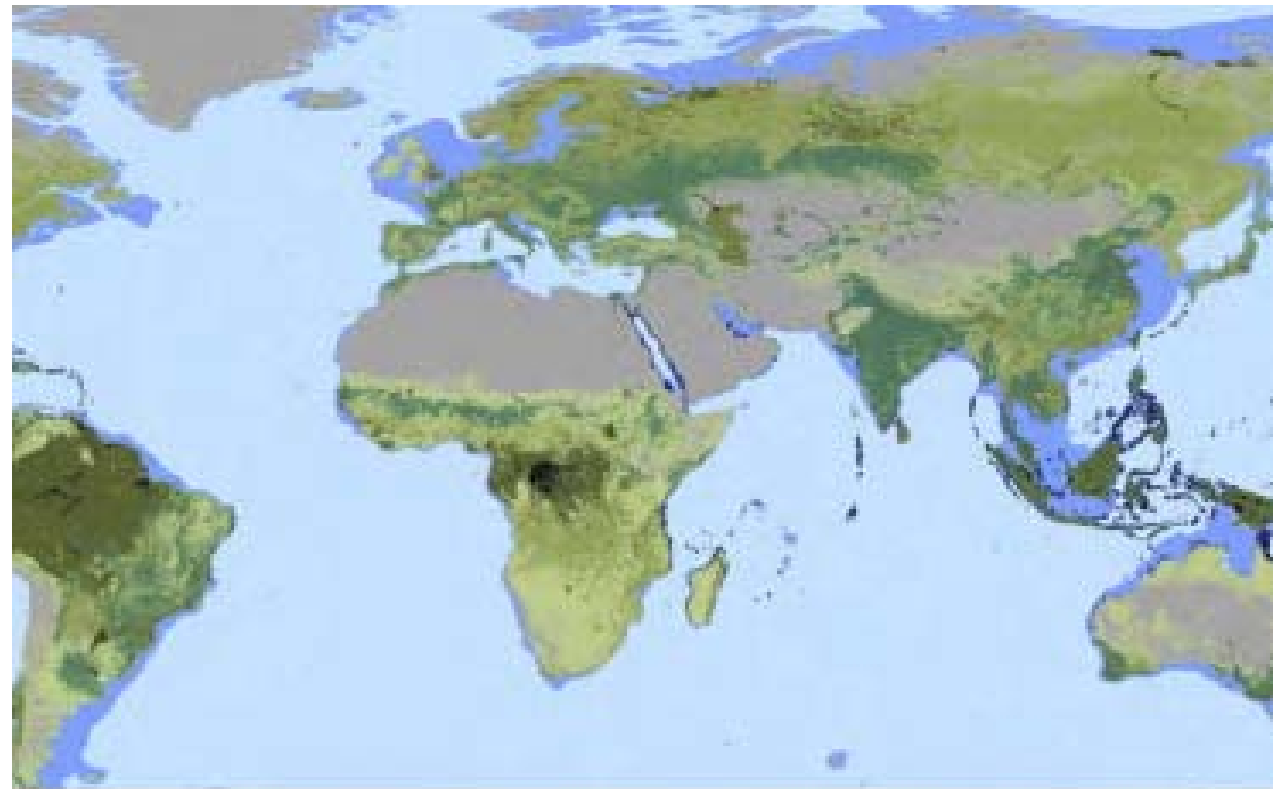
2. Way forward: Reconnecting society and nature through geodesign



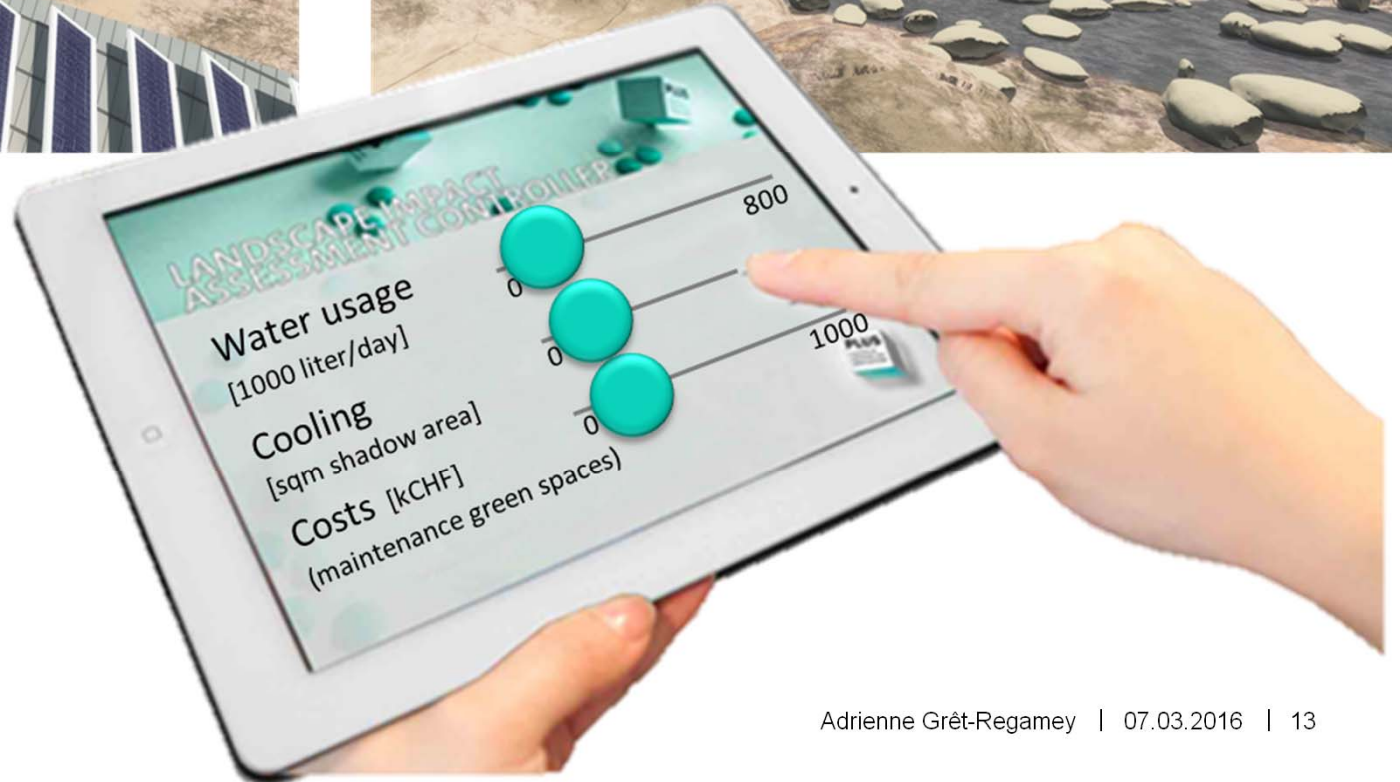
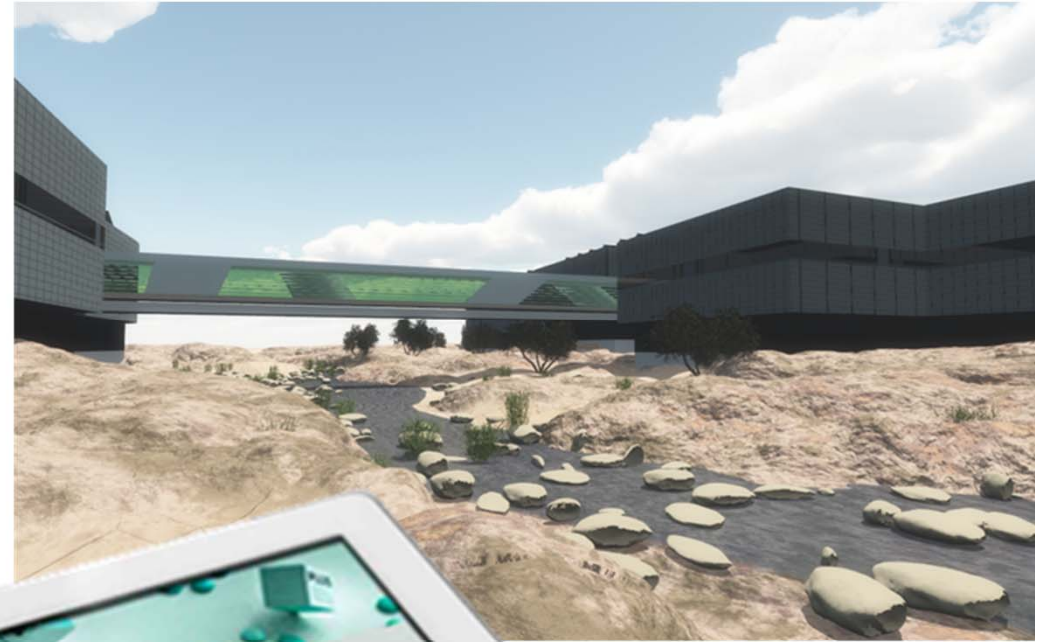
more in session 5 (une aide à la décision)

“Nature is worth nearly double of world GDP”

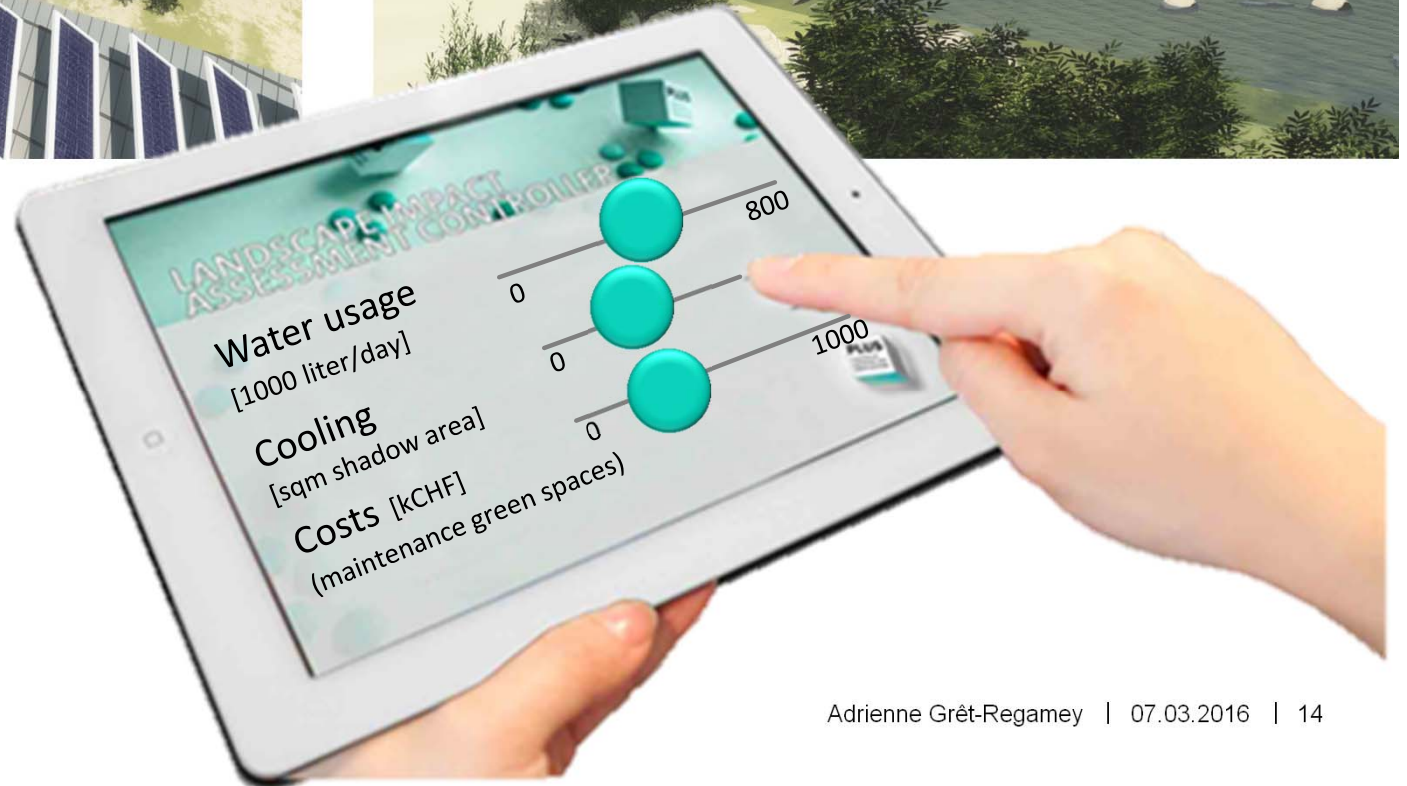
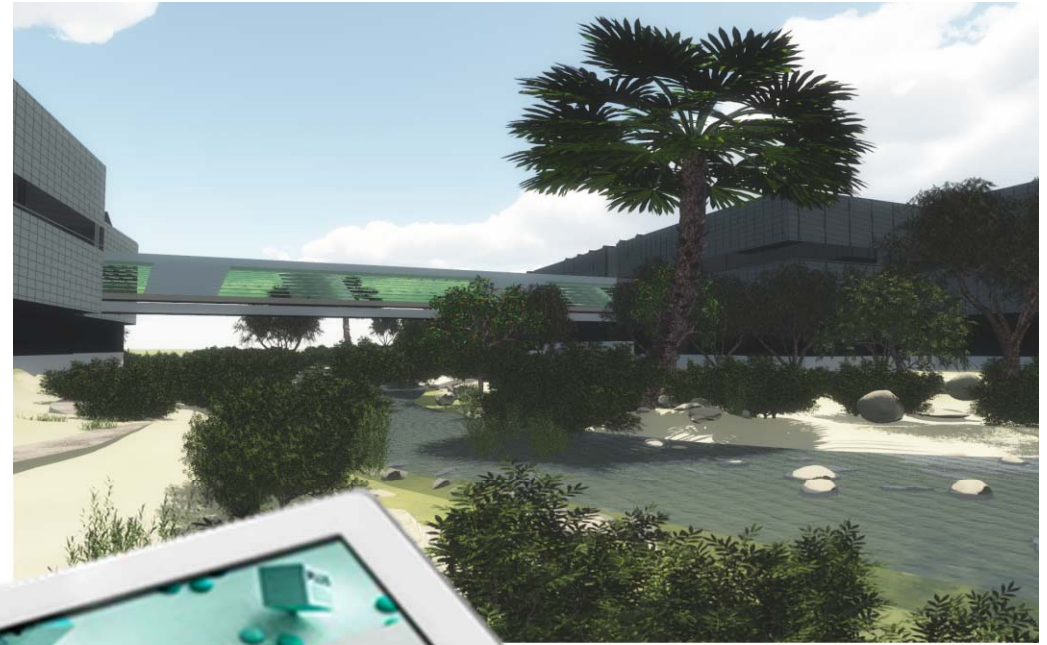
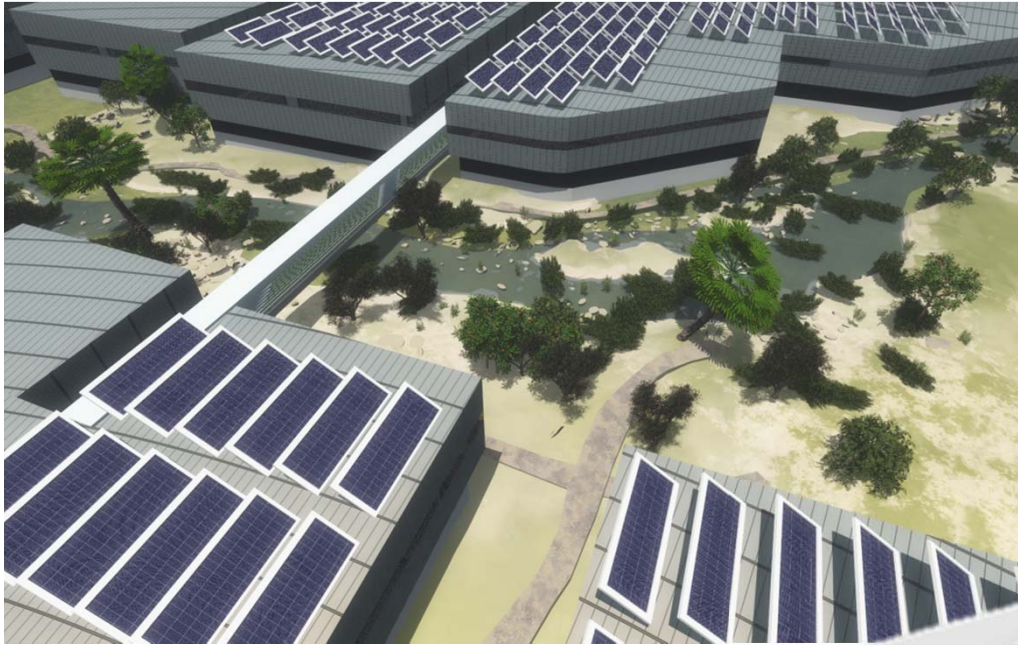
Flow Value per Hectare per year	Legend
\$0	
\$0	
\$0	
\$491	
\$2,222	
\$2,871	
\$3,013	
\$4,267	
\$5,264	
\$5,567	
\$6,661	
\$25,682	
\$193,845	
\$352,249	



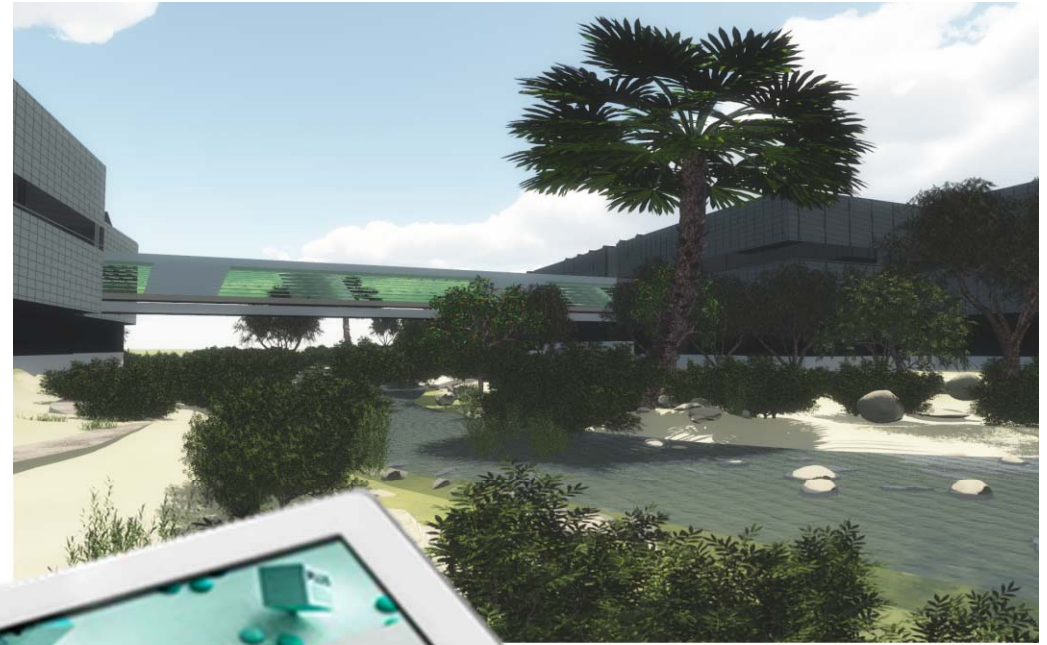
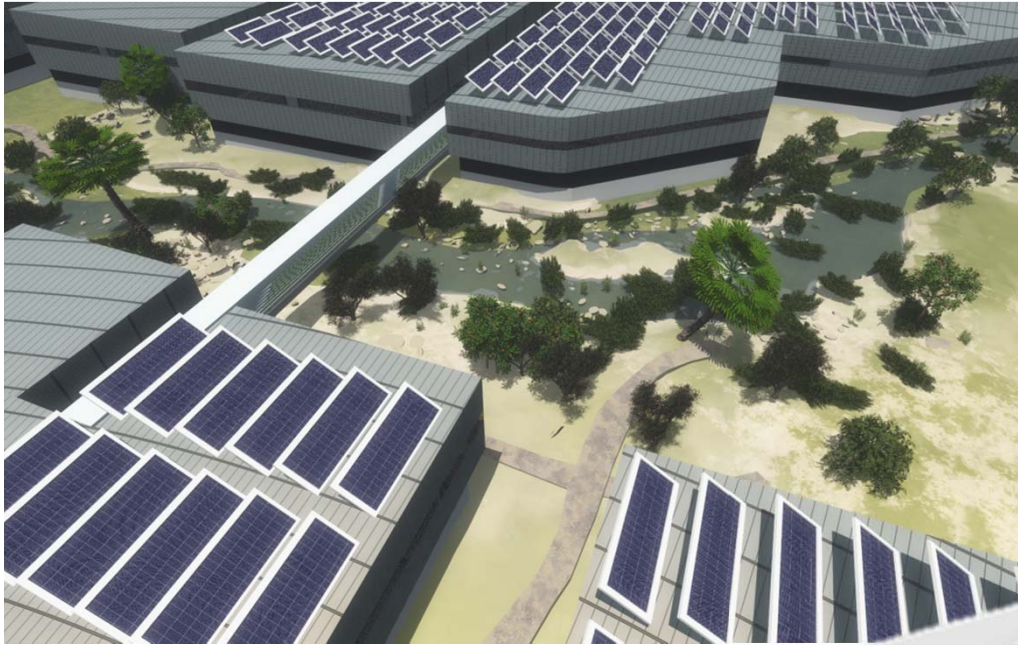
3. Way forward: Valuation of ES for better informed decisions



3. Way forward: Valuation of ES for better informed decisions







3. Way forward: Valuation of ES for better informed decisions

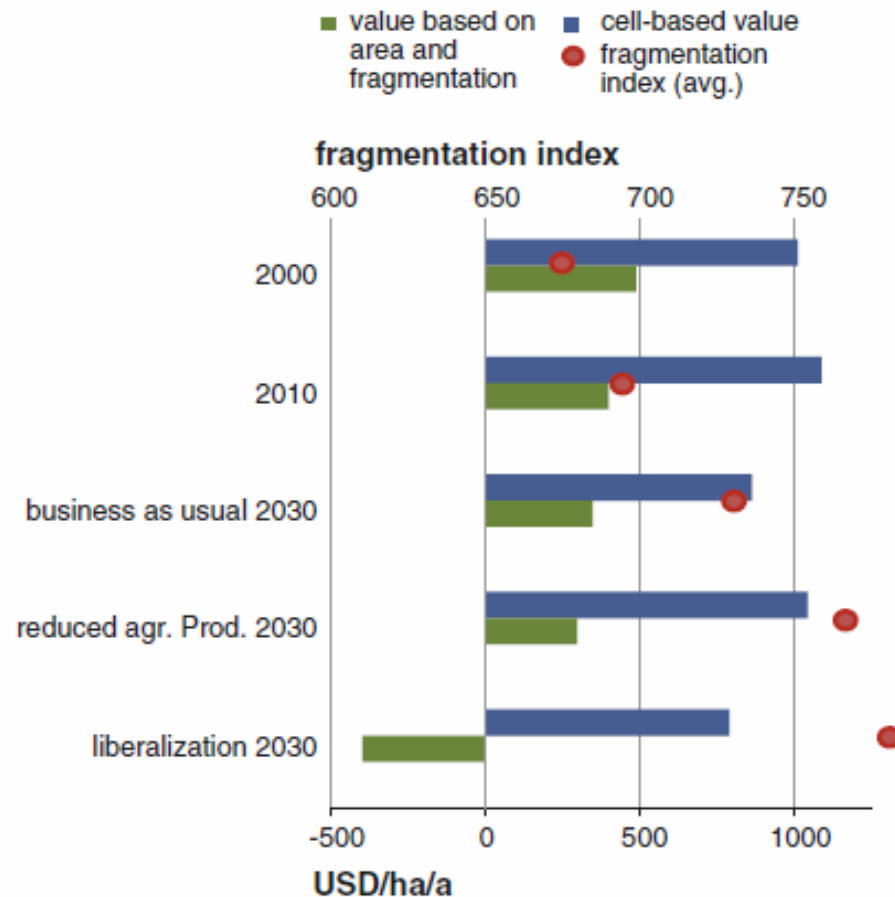


more in session 2b (quelle évaluation?)

“Assessing ecosystem services will help conserve biodiversity”

Rough timeline	Framing of conservation	Key ideas	Science underpinning
1960	Nature for itself 	Species Wilderness Protected areas	Species, habitats and wildlife ecology
1970			
1980	Nature despite people 	Extinction, threats and threatened species Habitat loss Pollution Overexploitation	Population biology, natural resource management
1990			
2000	Nature for people 	Ecosystems Ecosystem approach Ecosystem services Economic values	Ecosystem functions, environmental economics
2005			
2010	People and nature 	Environmental change Resilience Adaptability Socioecological systems	Interdisciplinary, social and ecological sciences

4. Way forward: ES management can support biodiversity, only when knowledge exchange



Grêt-Regamey et al. (2013): On the importance of non-linear relationships between landscape patterns and the sustainable provision of ecosystem services. *Landscape Ecology*.

Conclusion

- The ES concept...
- ...fosters transdisciplinarity
- ...allows integrating values of different stakeholders
- ...allows mutual learning processes
- ...allows empowering human actions
- ...allows prioritizing land use and management actions
- ... allows balancing economic, ecological and social aspects

